

Dockit Migrator for SharePoint Installation Guide

Table of Contents

I. PRODUCT OVERVIEW

II. SYSTEM REQUIREMENTS AND RECOMMENDATIONS

III. INSTALLATION STEPS

I. PRODUCT OVERVIEW

Dockit Migrator for SharePoint is a powerful SharePoint content migration tool that supports migration of contents from various sources to different target SharePoint, as described below:

File share Migration:

Source:

- ✓ File shares / File servers

Target:

- ✓ SharePoint 2016
- ✓ SharePoint Online in Office 365
- ✓ OneDrive for Business in Office 365
- ✓ SharePoint 2013
- ✓ SharePoint 2010

SharePoint Migration:

Source:

- ✓ SharePoint 2016
- ✓ SharePoint Online in Office 365
- ✓ SharePoint 2013
- ✓ SharePoint 2010
- ✓ SharePoint 2007 / WSS 3.0
- ✓ SharePoint 2003 / WSS 2.0

Target:

- ✓ SharePoint 2016
- ✓ SharePoint Online in Office 365
- ✓ OneDrive for Business in Office 365
- ✓ SharePoint 2013

- ✓ SharePoint 2010

II. SYSTEM REQUIREMENTS AND RECOMMENDATIONS

Dockit Migrator for SharePoint client application

- Windows 10 / 8.1 / 8 (or) Windows Server 2012 R2/ 2012 /2008 R2 with the latest service packs (32 or 64 bit platforms)
- .NET Framework - Full Installation of .NET Framework 4.6 or later

Dockit Server Agent (Optional server-side component)

- Windows Server 2012 R2, Windows Server 2012, Windows Server 2008 R2 web front-end server(s) or application server(s) running
 - ✓ Microsoft SharePoint Server 2016
 - ✓ Microsoft SharePoint Server 2013 or Microsoft SharePoint Foundation 2013
 - ✓ Microsoft SharePoint Server 2010 or Microsoft SharePoint Foundation 2010
 - ✓ Microsoft Office SharePoint Server 2007 or Windows SharePoint Services v3.0 (32-bit or 64-bit platform).

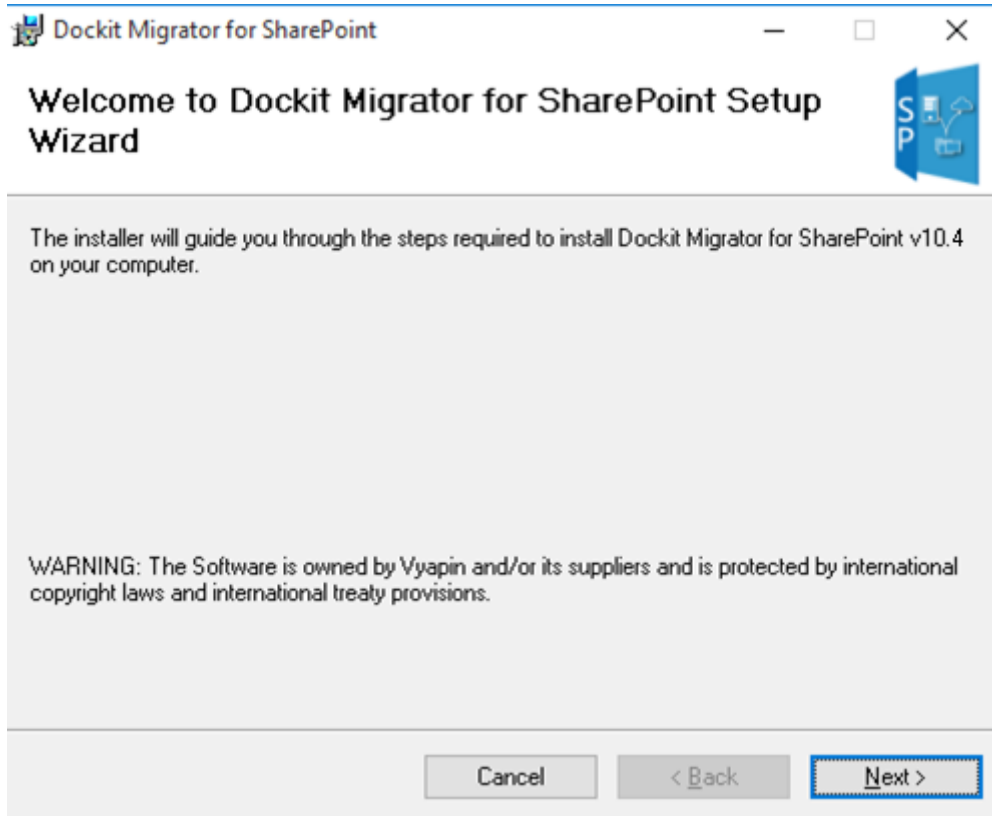
III. INSTALLATION STEPS

Once you download the software, you can install application packages depending on your content migration requirements. The simple setup wizard will guide you through the installation process as shown below:

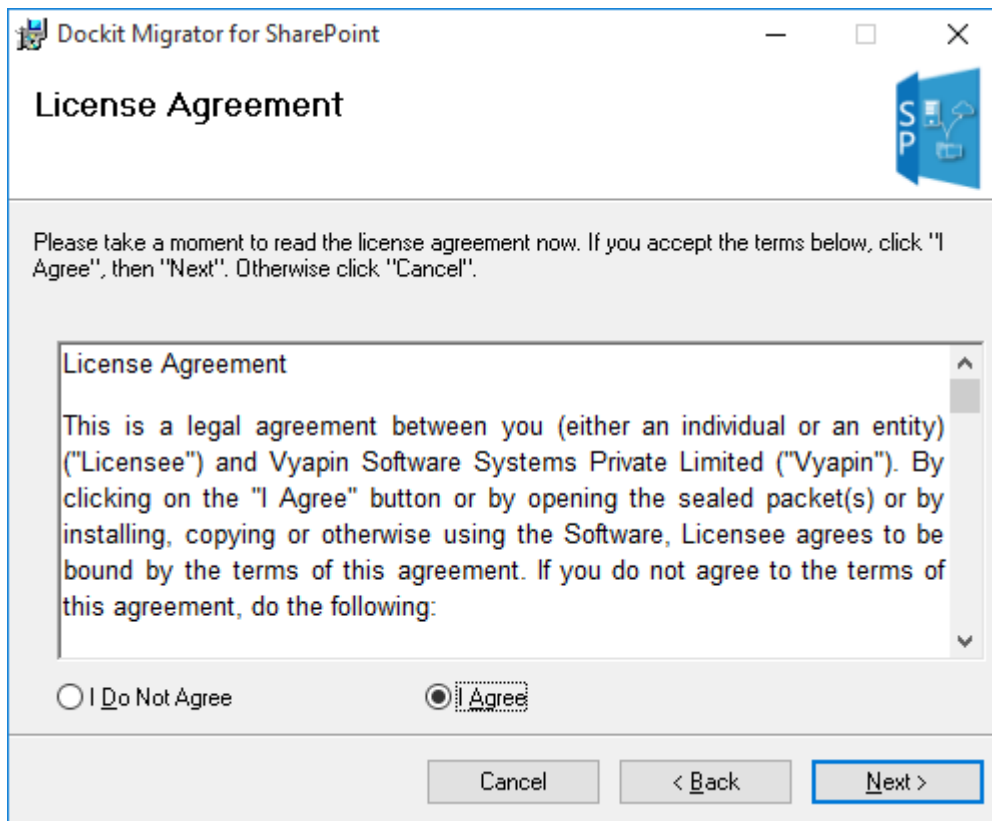
Dockit Migrator for SharePoint client application

DockitMigrator.msi - Dockit Migrator for SharePoint application. You can use this setup file to install Dockit Migrator for SharePoint application in the SharePoint Server or any client computer running Windows 10 / 8.1 / 8 (32-bit or 64-bit platforms).

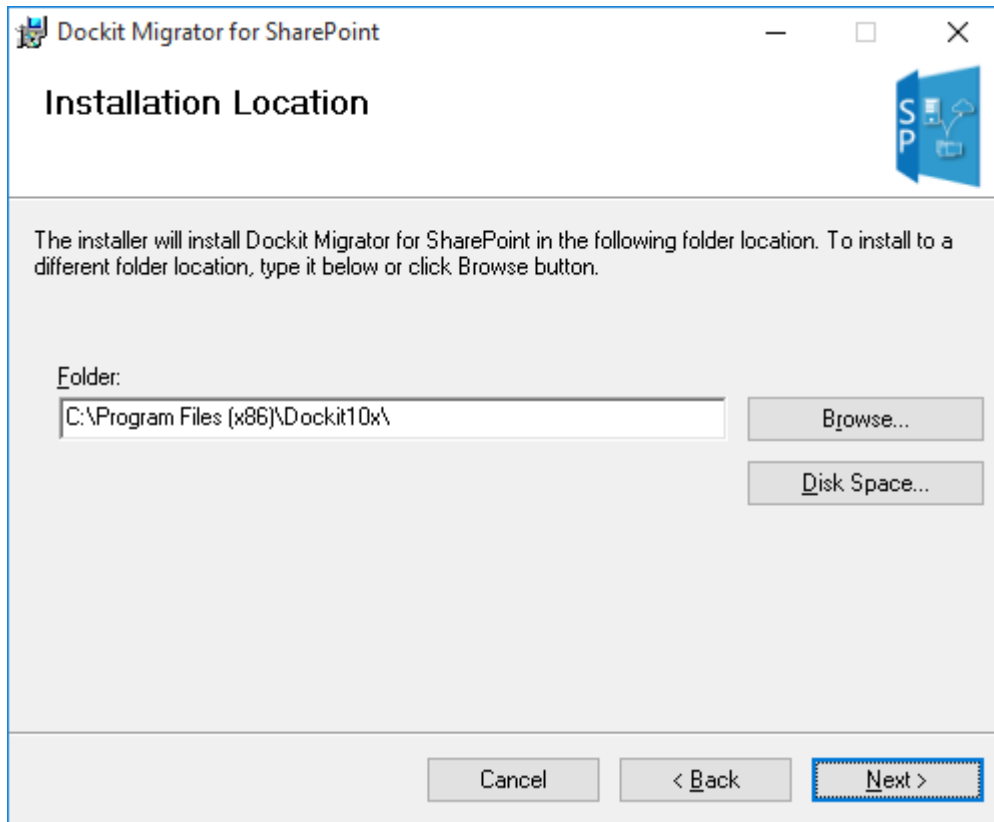
Once you double click the DockitMigrator.msi, the setup wizard **welcome** step will appear as shown below:



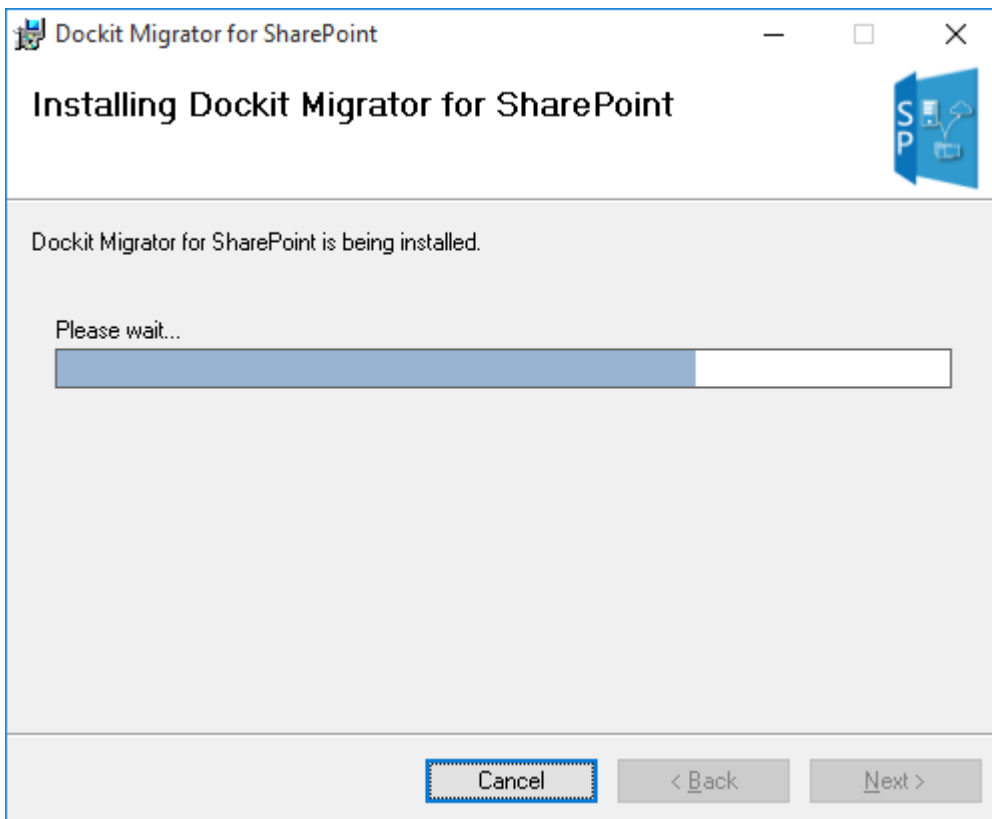
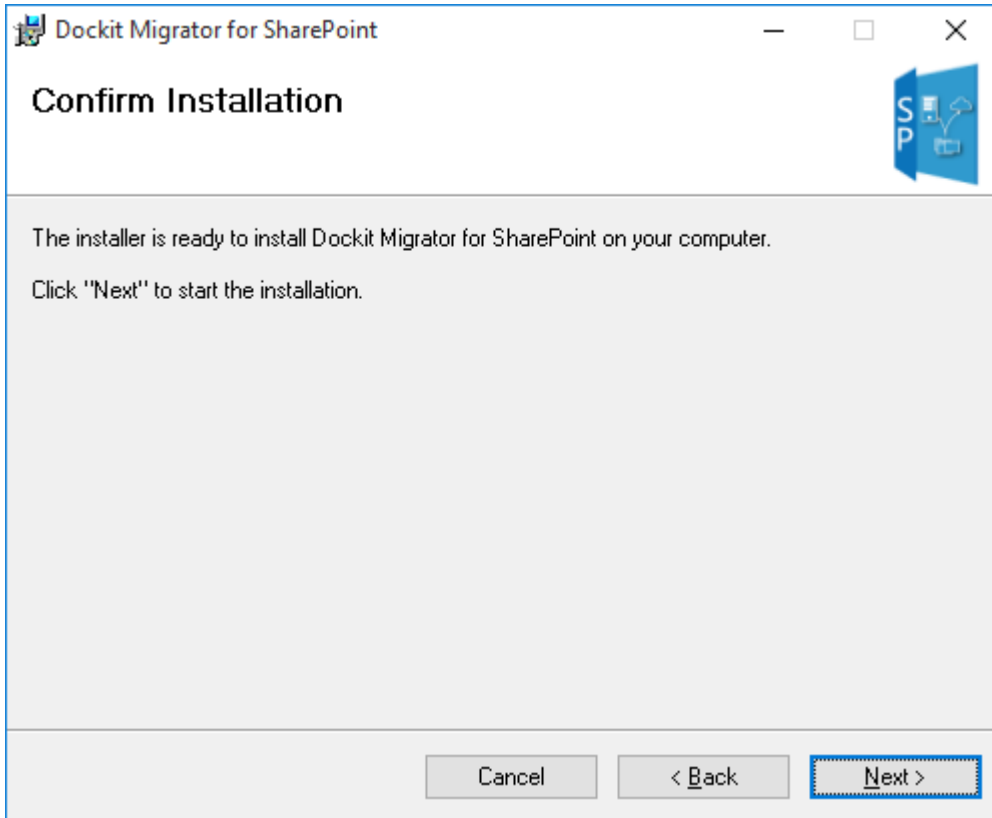
Click **Next** to proceed with the License Agreement. Click **I Agree** to accept the terms in the **License Agreement** screen as shown below.

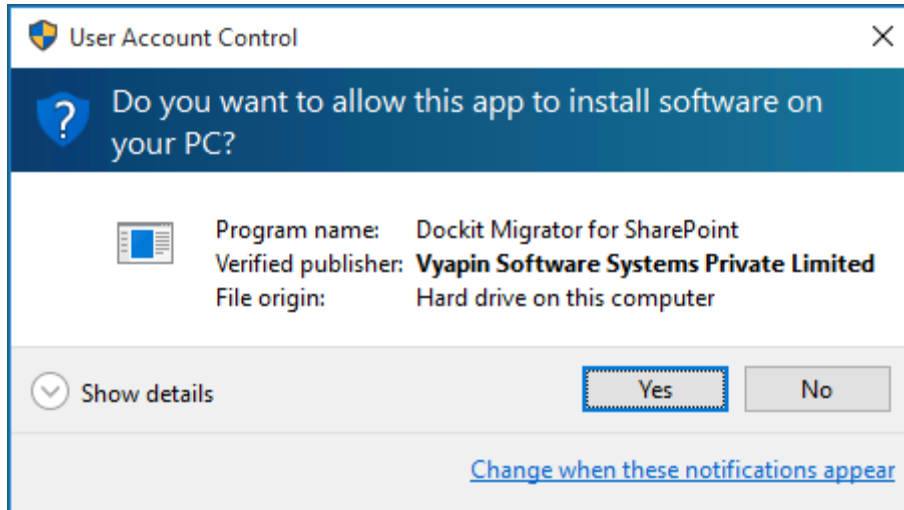


Click **Next** to proceed. Then **Installation Folder** will appear as shown below. **Enter** or **browse** the location to install Dockit Migrator for SharePoint application in this installation wizard step.

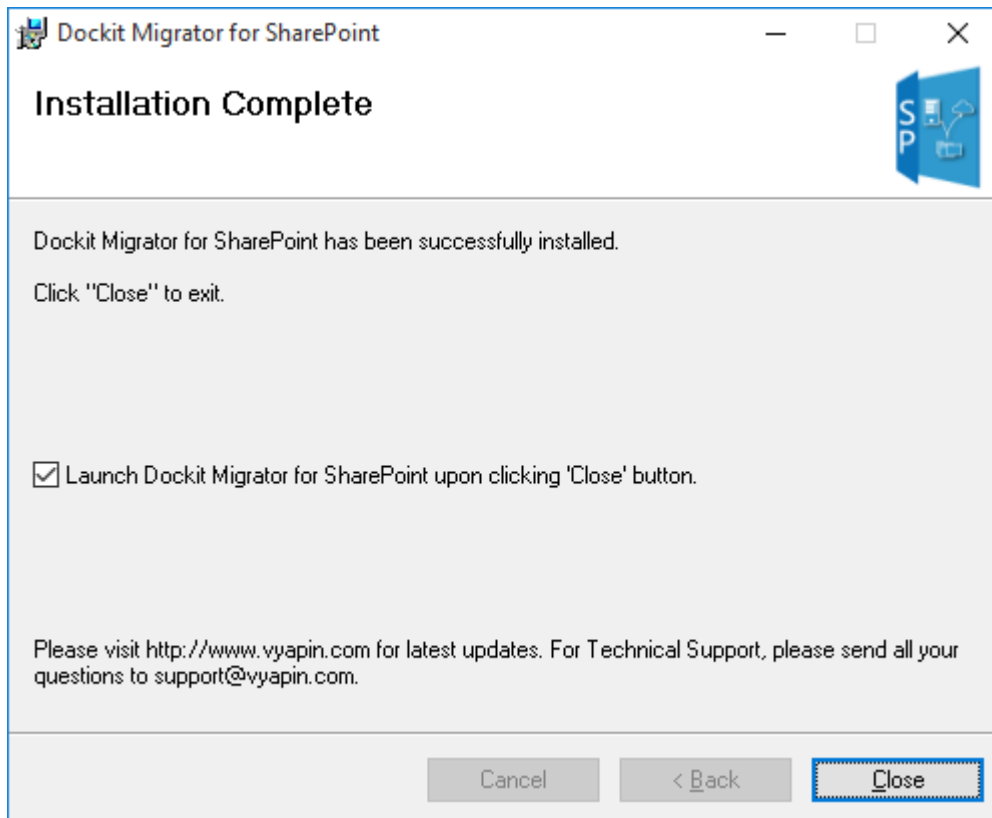


Click **Next** and proceed with the subsequent steps shown below:





Note: Click **Yes** in the “User Account Control” dialog to install Dockit Migrator for SharePoint application.



Dockit Server Agent installation

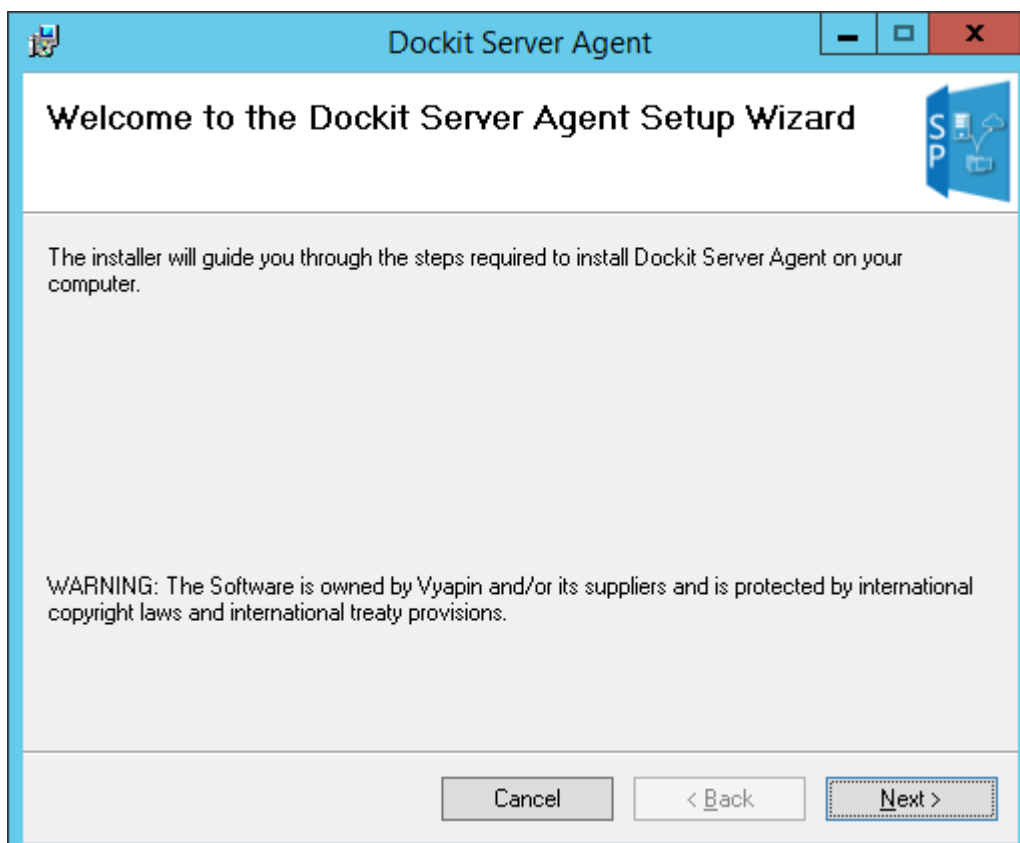
DockitServerAgent_2013&2016.msi - Dockit Server Agent component for SharePoint Server 2016 / 2013 or SharePoint Foundation 2013 must be installed on Windows Server 2012 R2 / 2012 / 2008 R2. You must install this component in the web front-end server(s) or application server(s) running SharePoint Server 2016 / 2013 or SharePoint Foundation 2013.

DockitServerAgent_2010.msi - Dockit Server Agent component for SharePoint Server 2010 or SharePoint Foundation 2010 must be installed on Windows Server 2008 R2 / 2008. You must install this component in the web front-end server(s) or application server(s) running SharePoint Server 2010 or SharePoint Foundation 2010.

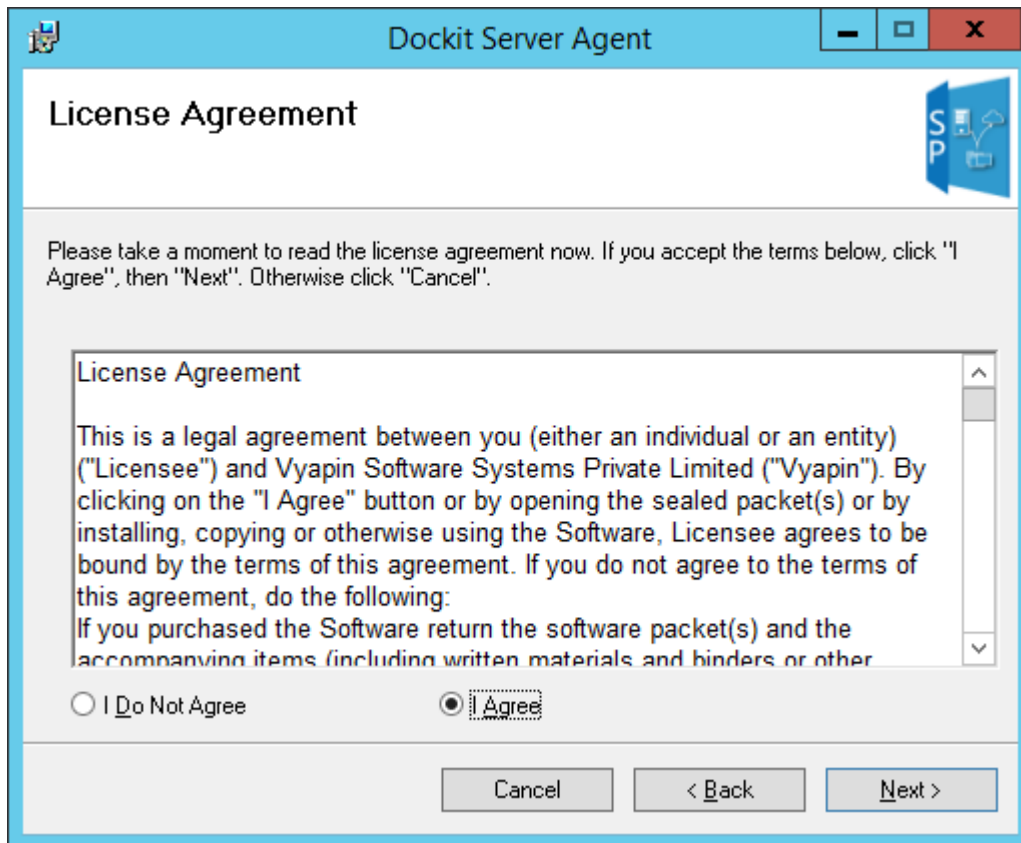
DockitServerAgent_2007_x86.msi - Dockit Server Agent component for MOSS 2007 / WSS 3.0 to be installed on 32-bit Windows Server 2008 / 2003. You must install this component in the web front-end server(s) or application server(s) running 32-bit MOSS 2007 or WSS 3.0.

DockitServerAgent_2007_x64.msi - Dockit Server Agent component for MOSS 2007 / WSS 3.0 to be installed on 64-bit Windows Server 2008 / 2003. You must install this component in the web front-end server(s) or application server(s) running 64-bit MOSS 2007 or WSS 3.0.

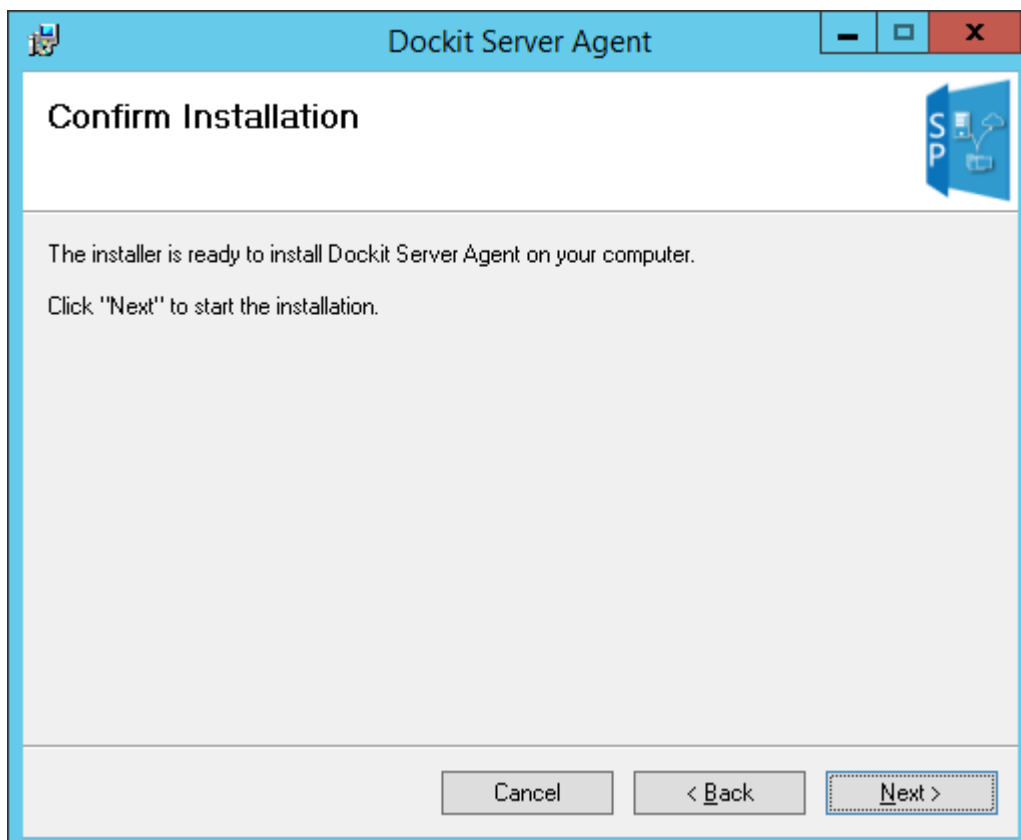
Once you double click the DockitServerAgent_2013&2016.msi (or any one of the above packages), the setup wizard **Welcome** screen will appear as shown below:

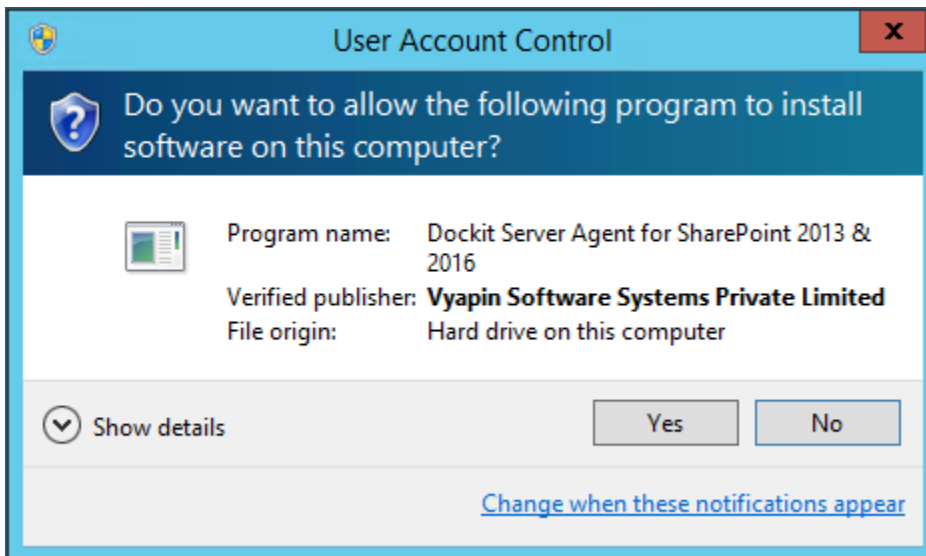
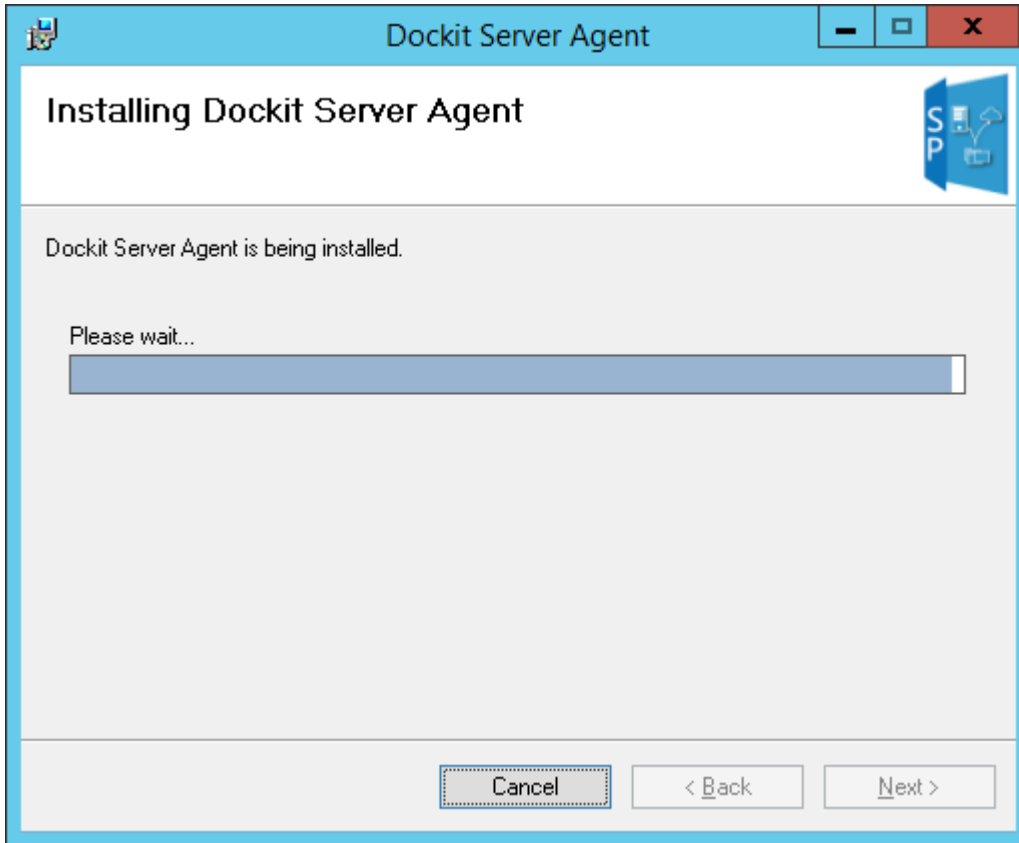


Click **Next** to proceed with the License Agreement. Click **I Agree** to accept the terms in **the License Agreement** screen as shown below.

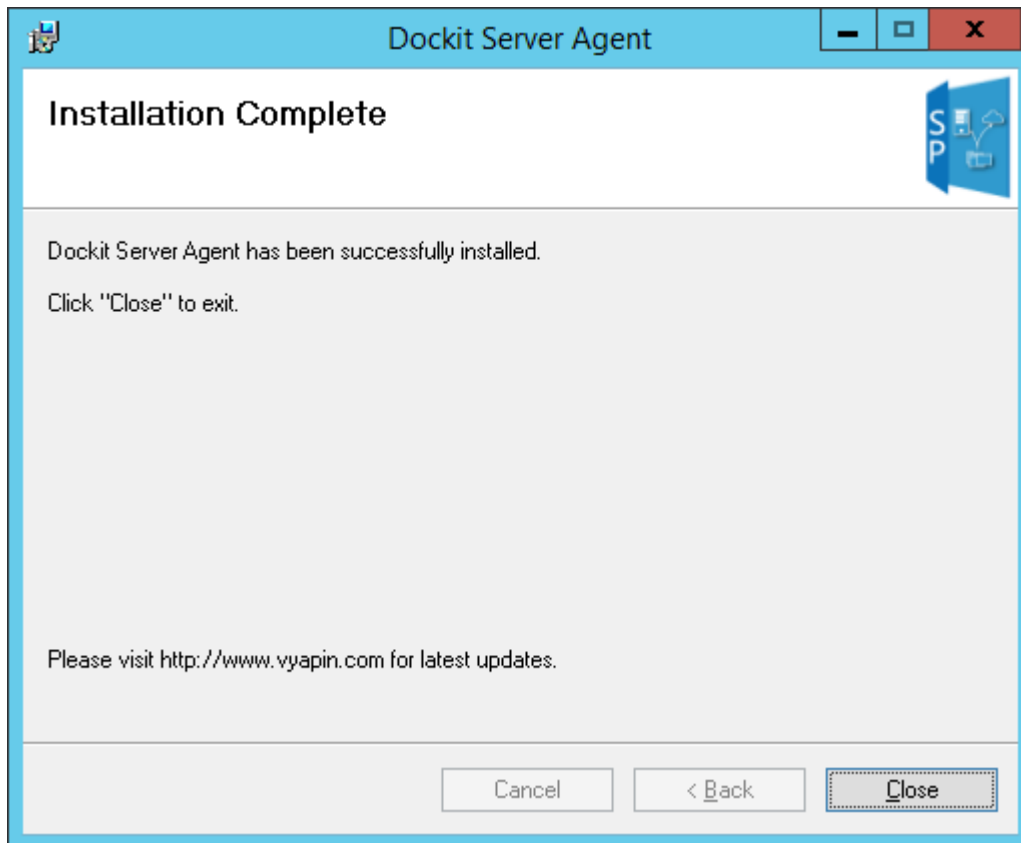


Click **Next** and proceed with the subsequent steps shown below:





Note: Click **Yes** in the “User Account Control” dialog to install Docket Server Agent for SharePoint 2013 & 2016.



Test Docket Server Agent

Once you install the Docket Server Agents in the respective environments, you can verify the existence of Server Agents in the source and target SharePoint servers using "Test Docket Server Agent" tool. You can find the tool by navigating to 'Tools → Test Docket Server Agent' in the client application.

Source SharePoint environment:

Test Dockit Server Agent
✕


Dockit Server Agent is an optional server-side component that must be installed in the Sharepoint Server. You can check the existence of Dockit Server Agent in the target SharePoint server using this tool by specifying a SharePoint site URL and a credential to connect.

Site URL:

Authentication:

User name: ...
(johndoe@contoso.com, contoso\johndoe, johndoe)

Password:

 Dockit Server Agent Service component is installed in the SharePoint farm of the specified SharePoint URL.

[Help](#)

Target SharePoint environment:

Test Dockit Server Agent
✕


Dockit Server Agent is an optional server-side component that must be installed in the Sharepoint Server. You can check the existence of Dockit Server Agent in the target SharePoint server using this tool by specifying a SharePoint site URL and a credential to connect.

Site URL:

Authentication:

User name: ...
(johndoe@contoso.com, contoso\johndoe, johndoe)

Password:

 Dockit Server Agent Service component is installed in the SharePoint farm of the specified SharePoint URL.

[Help](#)

ACKNOWLEDGEMENT

All the brand and product names are trademarks or registered trademarks of their respective owners.

Copyright © 2017 Vyapin Software Systems Private Limited. All rights reserved.